






Drop by a variety of great spots and nice stores as you head from Hotaka Station to Daio Wasabi Farm. As you set off for Daio Wasabi Farm, an intersection just a short way from the station will greet you. Head left to take the old "Salt Road", where a number of old Japanese buildings remain. If facing the station, take a right and walk for just a few minutes to arrive at the Rokuzan Art Museum. Take in the gorgeous sculptures exhibited inside as well as the beauty of the building and its garden. Also be sure to stop by the myriad of stores selling souvenirs such as wasabi before kicking back and relaxing at one of the many restaurants in town.

Go for a Stroll Around Hotaka Shrine!

Hotaka Station & Shrine Area Map



Wasabi



Hotaka Shrine

1 Hotaka Shrine

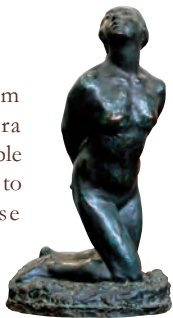
This is a traditional Japanese shrine with unique and, at first glance, mysterious ties to a maritime lifestyle. The name Azumino is in fact derived from the Azumi people, a second-century seafaring tribe from northern Kyushu. The shrine itself is a large and ornately carved wooden structure that was recently completely rebuilt. Ofune Festival, an annual celebration in September, reflects the shrine's maritime roots with local neighborhoods constructing beautiful wooden ships that are paraded throughout town.



Hotaka Shrine's Ofune Festival

2 Rokuzan Art Museum

You will find this beautiful art museum showcasing the works of Rokuzan Ogiwara nestled in the heart of Hotaka. Built to resemble a church, the founders of the museum wanted to convey the pioneer of modern Japanese sculpture's Christian beliefs. Many of Rokuzan's sculptures seem to represent struggle and inner turmoil.



Admission Fee Adults: ¥700 SHS: ¥300
Elementary and Junior High School Students: ¥150

Hours Mar. - Oct.: 9:00 - 17:10,
Nov. - Feb.: 9:00 - 16:10 (last entry 30 min. before close)

Closed Dec. 21 - 31, Mondays, days after nat'l holidays
(open every day between May and Oct.)

TEL 0263-82-2094

Azumino Art Line

Stretching from Azumino City to Hakuba Village along the foothills of the Northern Alps, the Azumino Art line encompasses 18 art museums and galleries. Enjoy touring a variety of splendid art centers all with the backdrop of the majestic Japan Alps.

Shops and Restaurants

1 Shop Ikkaku

Ikkaku sells fruits, vegetables, souvenirs, and homemade foods that were made or grown in Azumino. They also offer free tasting of locally brewed sake. Don't hesitate to ask questions while shopping.



Hours 11:00 a.m.–5:00 p.m. Closed Tue TEL 090-9386-6901

3 Shop Onishi Watanabe Wasabi Store

Direct sales of wasabi pickles in front of Hotaka Station. The wasabi is cultivated at Azumino Wasabi-no-Sato. They specialize in souvenirs.



Hours 8:00 a.m.–6:30 p.m. Open daily TEL 0263-82-5132

5 Shop Kobayashi Wasabi Store

Kobayashi's fresh wasabi is raised in the pristine meltwaters flowing from the Japan Alps. Enjoy the unique and traditional flavor of their wasabi. You will surely leave the shop a satisfied customer!



Hours 8:30 a.m.–6:30 p.m. Closed Wed (some irregular holidays so call ahead)
TEL 0263-82-2359

7 Shop Maruroku Wasabi Wholesale Shop

We are cultivating wasabi and bringing up rainbow trout without unnecessary additives in our farm. "Safe, worry-free, and delicious" is our motto.



Hours 10:00 a.m.–5:00 p.m. Closed Wed, Thu, & New Year holidays
TEL 0263-82-2142

9 Japanese / Izakaya Watabetei

Creative seafood dishes and brand-name shochu. Watabetei's restaurant also boasts a wide selection of Japanese sake (rice wine).



Hours Weekdays: 11:30 a.m.–2:00 p.m. / 5:00 p.m.–11:00 p.m.
Sunday: 11:30 a.m.–2:00 p.m. / 5:00 p.m.–10:00 p.m.
Closed Tue TEL 0263-82-8410

11 Azumino City Tourist Information Center

Azumino City runs a dedicated tourist office throughout the year outside Hotaka Station. English-speaking staff are friendly and are on hand with lots of great information regarding attractions throughout the area. Free Wi-Fi is available without any registration and password. Discount coupons are also available for several of the museums along the Azumino Art Line, and a variety of souvenirs are sold here as well.

Hours 9:00-17:30(Apr.-Oct.), -17:00 (Nov.-Mar.); Closed during the New Year Holidays TEL 0263-82-9363

Café & Shop 2 Azumino Bazaar Wakamatsuya

This store is modeled after the Meiji Era (~130 years ago) architectural style known as "kura" or "misegura". The interior is a mysterious space where Japanese harmony, beauty, and food are gathered, blending traditional culture and worldly beauty. Welcome! Wakamatsuya sells oyaki (traditional buns) and gelato.



Hours 9:00 a.m.–7:00 p.m. Open 7 days a week TEL 090-9008-6986

4 Shop Ikedaya Rice Cake Store

A small store located at the entrance to Hotaka Shrine. Daifuku-mochi are soft rice cakes filled with a sweet azuki bean paste. They are one of Japan's most enduring traditional confections. The flavors here remain largely unchanged since the store's founding 130 years ago.



Hours 9:00 a.m.–6:00 p.m. Closed 2nd, 4th Wed TEL 0263-82-5739

6 Shop Ogasawara Wasabi Shop

This shop has been making wasabizuke (wasabi pickled in sake lees) and other pickles for over 50 years. Their wasabizuke is made without preservatives and will keep for 10 days in the refrigerator. Most delicious when eaten fresh!



Hours 9:00 a.m.–6:30 p.m. Closed Thu TEL 0263-82-2414

8 Japanese / Izakaya Azumino Katsumian

A wood-built restaurant in the traditional Japanese style. Katsumian specializes in traditional Japanese cuisine, as well as buckwheat noodles and Shinshu salmon. Guests here can view katsu (pork cutlets) being hand-fried to order. Beef is not served.



Hours 11:30 a.m.–2:00 p.m. 5:00 p.m.–8:30 p.m. (L/O)
Closed Wed (irregular) TEL 0263-82-2169

10 Shop Maruyama Confections – Main Store

Established in 1909, this store has specialized in producing Japanese-style confectionery in Hotaka, Azumino for more than 100 years. They have a large range of local confections inspired by the climate, history, and legends of Azumino valley.



Hours 9:00 a.m.–6:30 p.m. Closed irregularly TEL 0263-82-2203

Cycling in Azumino



If you want to see the best of Azumino, hopping on a bicycle is the perfect way to see the city and the beautiful scenery that surrounds it. There are options for everyone, from families and casual bikers to sports enthusiasts. You can also go on a guided cycling tour for an even more in-depth look at what Azumino has to offer.

There are two rental shops in front of Azumino Station. Both offer a variety of bicycle types as well as luggage storage, luggage delivery, and bicycle delivery services. Pay when you return your bikes.

Hitsujiya

A café and rental bike shop directly across from Hotaka Station. Rental fee includes liability insurance. Rates from ¥300/hour. Bike types: standard, e-bikes, kids' bikes, and mountain bikes
Hours: 8:30–18:00 (winter 10:00–17:00)
Closed irregularly TEL: 0263-82-3888



Shinanoan

Located just a 2-minute walk down the street from the station. Rates from ¥200/hour. Bike types: standard, e-bikes, kids' bikes, sport bikes, mountain bikes, tandems
Hours: 8:00 to sunset
Closed from mid-Dec to mid-Mar
TEL: 0263-82-3730



Guides

With a local guide, you will learn fun facts about the area and get an insider's perspective of Azumino. Contact the following English-speaking guides for more information:

W-Asobi email: info@w-asobi.com <https://w-asobi.weebly.com/>

Iwana Agile email: nitanda@iwana-agile.com <http://www.iwana-agile.com/>



Share Cycles

Share cycles can be rented through the "Hello Cycling" smartphone app (www.hellocycling.jp, in Japanese only/credit card required). The bikes have electric-assist motors and several pick-up and drop-off locations around the city.



Explorer Azumino!

www.azumino-e-tabi.net/en

Azumino Search

